



a **NUCOR** company

# BIM

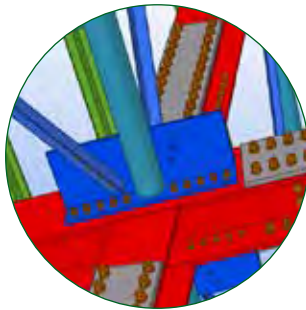
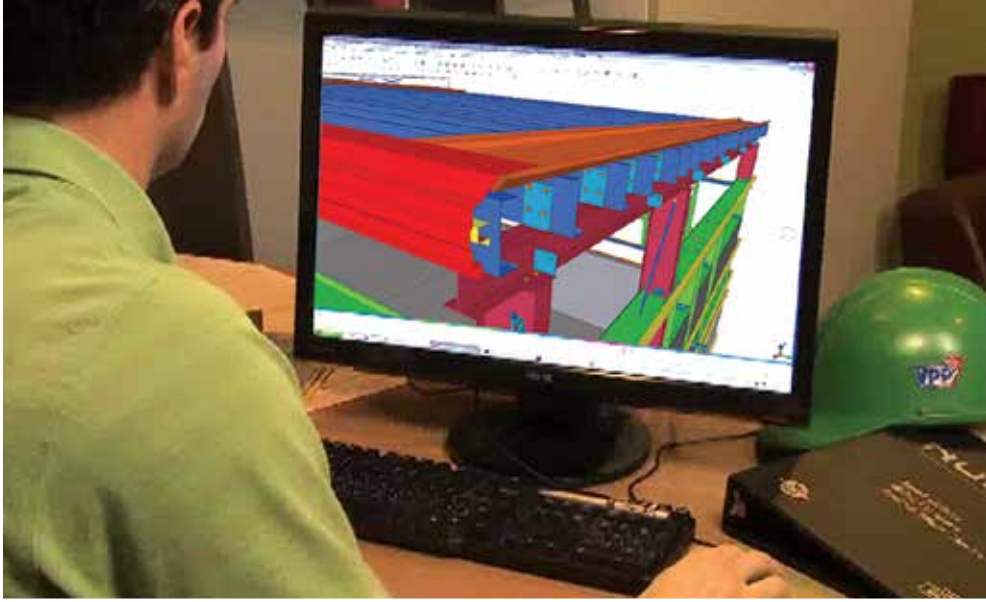
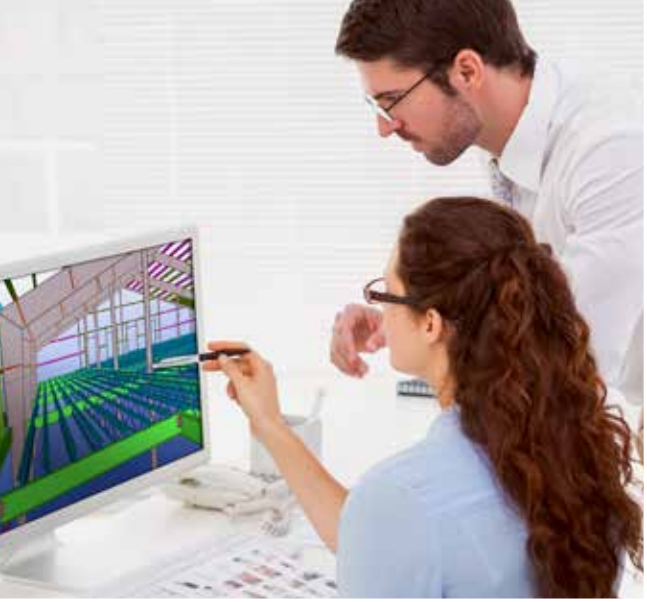
Transforming the Industry  
with 3D Digital Building  
Information Modeling



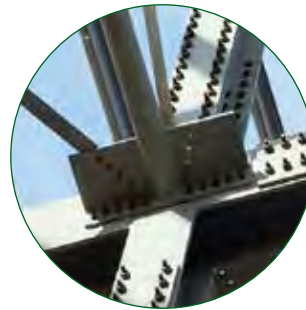


SOLVE PROBLEMS **BEFORE** BREAKING GROUND





BIM 3D MODEL



ACTUAL STRUCTURE

Nucor is driving an unparalleled revolution in the construction industry using 3D digital modeling software to more effectively design, detail, manufacture and erect buildings.

We've paired our proven track record of quality and service with the future of BIM 3D modeling to give you an edge over your competitors in the market. BIM 3D in Level of Development (LOD) 400 provides a sharper image and more clarity than conventional modeling technology or traditional 2D plans.

**BUILD BETTER WITH BIM**

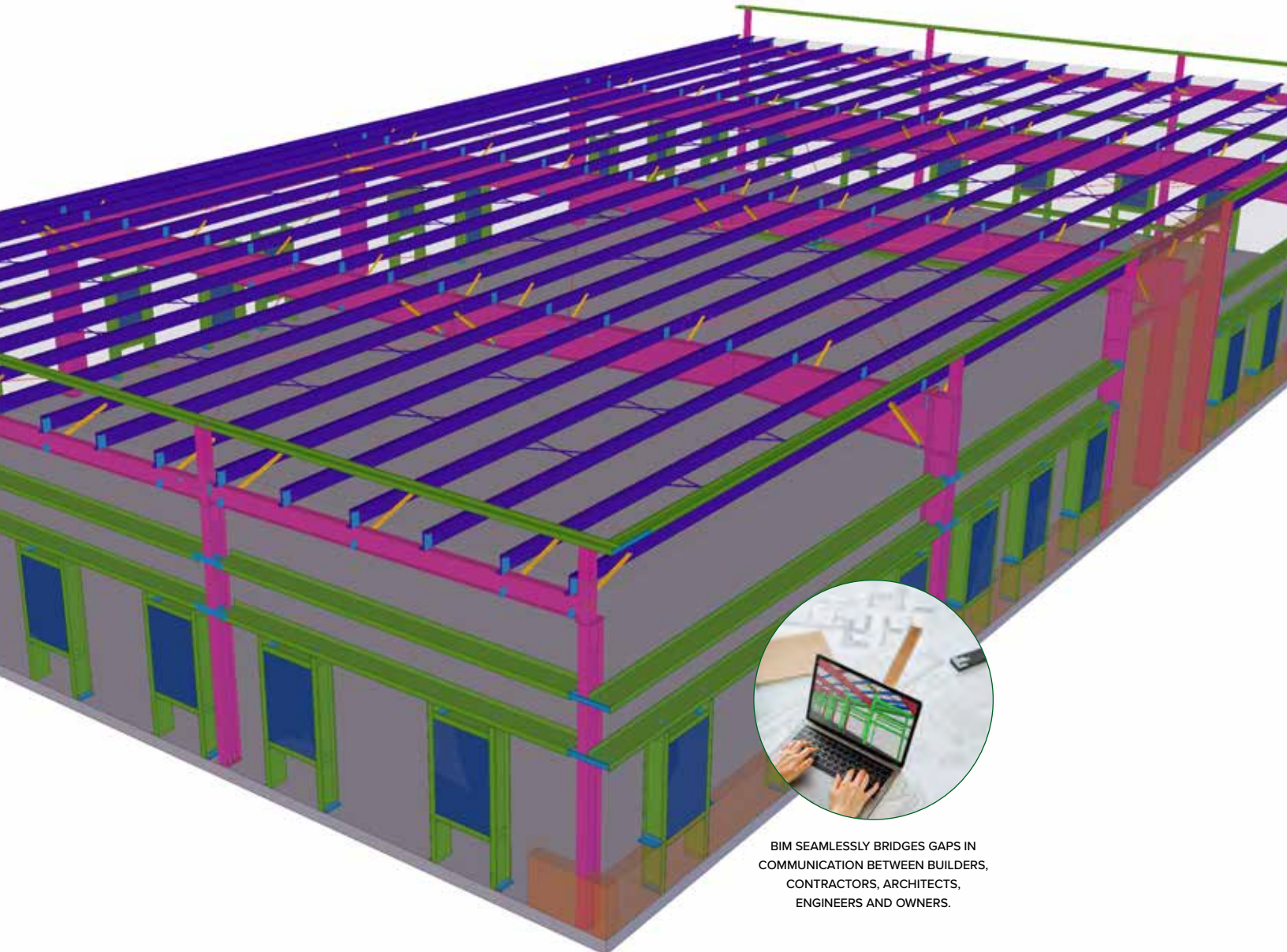
# WHAT IS BIM?

## CUSTOM METAL BUILDING DESIGN WITH BIM

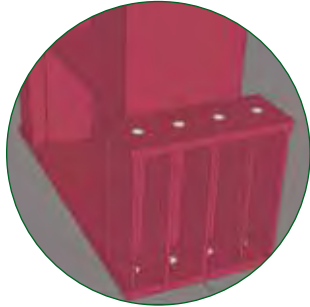
A revolution in the construction industry – Nucor Building Systems uses the powerful value of 3D Building Information Modeling (BIM) software to more effectively design, detail, and manufacture your custom metal building.

This game-changing metal building technology allows us to provide a detailed, three-dimensional conceptual replica of your building, allowing you to see your project as it will be when constructed in the field.

Unlike past 3D innovations in the building industry, BIM is more than a conceptual modeling tool. BIM encompasses building geometry, spatial relationships, geographic information, quantities and properties of building components. When the modeling software is used by manufacturers and principles involved in a building project, the resulting BIM is usable for fabrication. It involves ground-up reality rather than top-down theory.



BIM SEAMLESSLY BRIDGES GAPS IN  
COMMUNICATION BETWEEN BUILDERS,  
CONTRACTORS, ARCHITECTS,  
ENGINEERS AND OWNERS.



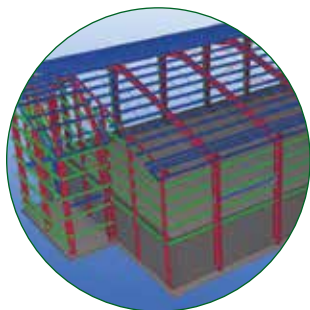
### **3D DIGITAL PROTOTYPE**

BIM constructs a detailed, conceptual replica of your building by encompassing geometry, spacial relationships, geographic information and component properties. This model enables you to view all structural, HVAC, mechanical, electrical and plumbing systems that make up your building. This allows you to address potential conflicts and make changes prior to fabrication.



### **ENHANCED 3D VISUALIZATION**

The high quality 3-dimensional model of your building includes images as well as product specification data. This software has the ability to manage your building data throughout your building's life cycle. This shared knowledge resource forms a reliable basis for decisions and communication between contractors, architects, engineers and building owners, allowing for seamless coordination and collaboration.



### **TRIMBLE CONNECT**

NBS has partnered with Trimble, a leading modeling software solutions provider, who offers Trimble Connect, a free software application. With Trimble Connect, those involved with your project are able to view the BIM model of your building. The digital copy of your completed project model can also be used for future operation and maintenance.

# COLLABORATION & INTEROPERABILITY

## TEKLA BIM SOFTWARE

Nucor proudly partners with Tekla, a leading modeling software solutions provider. Utilizing the Tekla Structures program as a BIM software solution ensures the interoperability of 3D with 2D systems.



### BIM IS THE CHOICE

OF LEADING BUILDERS, ERECTORS,  
ARCHITECTS, ENGINEERS AND  
DESIGNERS BECAUSE IT:

Improves communication across  
project team members—significantly  
reducing change order costs

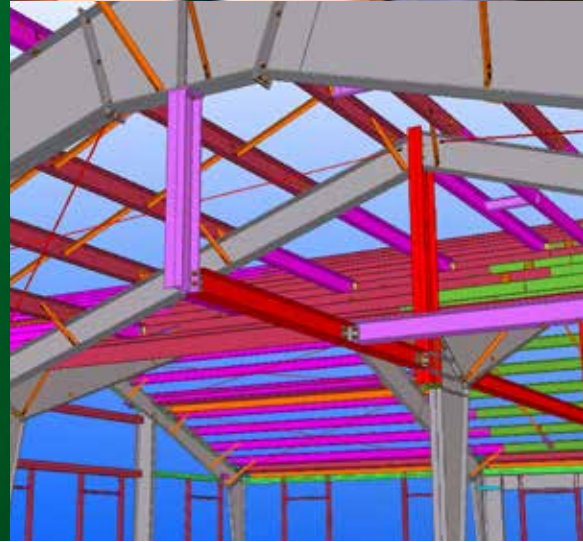
Produces a working model that  
is usable for fabrication

Serves as a significant resource for  
erectors in viewing assemblies

Leads to increased productivity

Enhances quality control,  
including clash detection

Provides comprehensive  
life-cycle management



Tekla Structures makes it possible to share model and drawing information with IFC-compliant architectural modeling programs. It provides an accurate, detailed, intelligent and data-rich 3D building information modeling environment and creates open collaboration and interoperability and 3D building information models that can be utilized and shared by all building and construction disciplines.

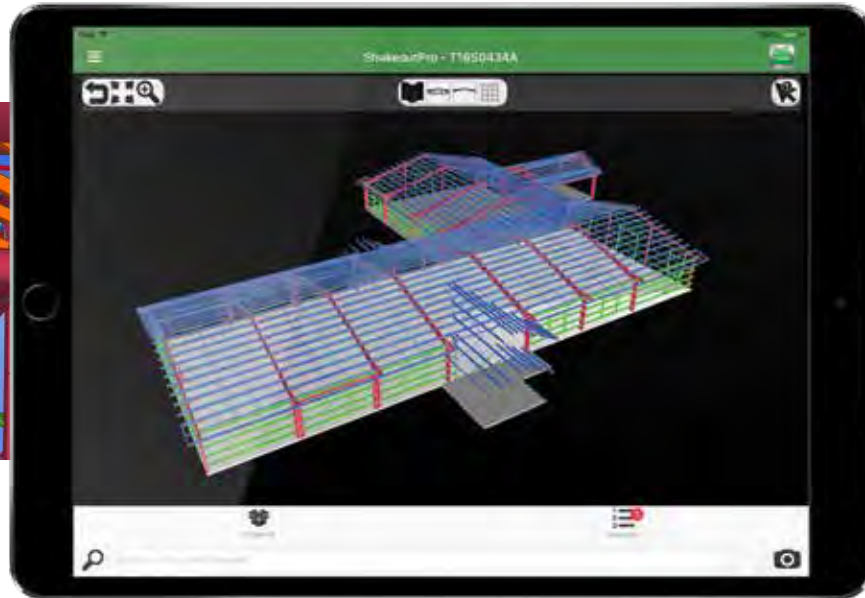
A unique SML link between Tekla Structures and Graphisoft® ArchiCAD®, allows architects and engineers to share and coordinate project information.

Tekla software supports legacy formats, such as DGN and DWG with an AutoCAD® drawing export, allowing engineers to create DWG files. The drawings can then be imported into the architectural drawing environment for production or referencing.

Trimble Connect is a free software application for building information model-based project cooperation. With Trimble Connect everyone involved with a project is able to view the BIM model at no charge. Enabled for Windows-based tablet devices, Trimble Connect is available for download at <https://connect.trimble.com/>.

# SHAKEOUTPRO®

**IT'S NOT MAGIC, IT'S THE FUTURE OF  
CONSTRUCTION – AND BIM MAKES IT POSSIBLE**



THE BIM 3D MODELING PROCESS  
MAKES IT POSSIBLE TO DIGITALLY  
NAVIGATE AND MANAGE YOUR  
PROJECT ON-SCREEN.

ShakeoutPro® is a unique mobile app that has been specifically developed to help Builders and Erectors save time receiving, unloading and staging steel at the job site. And it only takes a matter of minutes to become proficient with this easy-to-use, powerfully robust application. Just download ShakeoutPro® on your smart device to get started. Then simply point, click and capture the barcode with your device's camera, and the part will instantly be highlighted in the Tekla 3D BIM Model – showing you exactly where the product fits within the project. From there, you can determine where to stage the parts for maximum efficiency.

You don't even have to purchase any special equipment or software. All project data is accessed from the cloud, and the app uses technology that is already available on today's smart phones and tablets. Now, your fully realized project fits right in the palm of your hand.



a **NUCOR**® company

[nucorbuildingsystems.com](http://nucorbuildingsystems.com)

